

REDUCING THE PERCENTAGE OF ADULT PATIENTS EXPERIENCING MODERATE OR SEVERE PAIN DURING LOCAL ANAESTHESIA ADMINISTRATION OF MAXILLARY DENTAL EXTRACTION PROCEDURE IN KLINIK PERGIGIAN CHEMOR

QLL-114

Yusraa A², Khairul Fikri H¹, Nur Maziah M¹, Fatin Nabihah Z¹, Darshinthini P¹, Wan Nur Nadia WM¹
¹Klinik Pergigian Chemor, Perak
²Klinik Pergigian 1 Malaysia UTC, Perak



KEMENTERIAN KESIHATAN MALAYSIA

INTRODUCTION

Klinik Pergigian Chemor is a main dental clinic in Perak. According to daily records, 42% of adult patients had dental extractions under local anaesthesia (LA) in a year. However, feedback from a customer satisfaction survey showed that some patients felt pain during the LA administration. A recent survey found that 77% of adult patients experienced intolerable pain during LA

1.0 SELECTION OF OPPORTUNITIES FOR IMPROVEMENTS

1.1 PROBLEM PRIORITIZATION- SMART

PROBLEM	S	M	A	R	T	TOTAL
Frequent occurrence of unreferred impacted maxillary canines among school children under Dental Therapists in SUK(C) POILAM & SEK MEN POILAM	11	12	10	10	8	51
Low rate of antenatal dental check up in Klinik Pergigian Chemor	9	11	10	9	7	46
3. High Percentage number of patients experience during Local Anaesthesia (LA) for Maxillary Dental Extraction Procedures in Klinik Pergigian Chemor	15	13	12	14	12	66

REASON FOR SELECTION

S	Data collection showed that 77% of patients have intolerable pain during local anaesthesia.
M	Can obtain data from clinical assessment and survey after the dental procedure.
A	Local anaesthesia (LA) is used daily in dental clinics, especially for extractions. However, it is often the main cause of fear and discomfort for patients.
R	Remedial action could be implemented to improve the working process.
T	Managing pain and anxiety in patients has always been an essential part of dentistry. Hence, it is about time to implement pain-free dental care. Can be completed within a year.

1.2 LITERATURE REVIEW

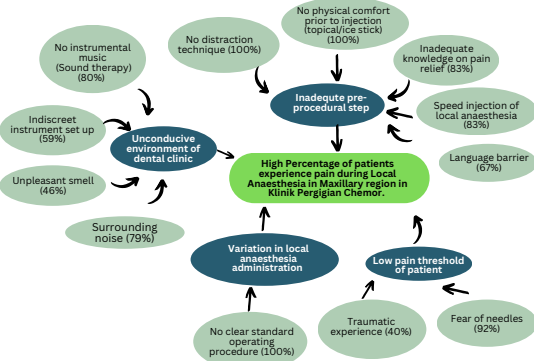
Pain experienced during LA administration for dental procedure is almost a universal concern. Previous studies identified various factors that cause pain during LA administration & some of method to relief pain have been introduced. These include applying of slow injection, hide needle technique, vibration technique, cold application to buccal mucosa and others.

1.3 PROBLEM STATEMENT

Managing pain and anxiety in dentistry is crucial. Local anaesthesia (LA) is commonly used to minimize pain, but the fear and discomfort of the injection itself can be a significant barrier for many patients. At Klinik Pergigian Chemor, from October to December 2019, a high percentage of adults reported moderate to severe pain (pain scores of 4 or above) during LA injections. This pain can increase fear and anxiety, making patients reluctant to receive necessary dental treatments. Factors contributing to this issue include an unsuitable clinic environment, inadequate preparation, patient pain thresholds, and differences in LA administration techniques. The goal is to reduce the number of adults experiencing moderate to severe pain during local anaesthesia at Klinik Pergigian Chemor.

2.0 KEY MEASURES OF IMPROVEMENT

2.1 CAUSE EFFECT ANALYSIS



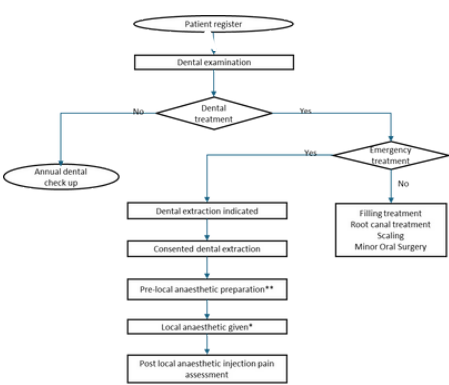
2.2 STUDY OBJECTIVE

OBJECTIVE
 To reduce the percentage of adult patients experiencing moderate or severe pain during local anaesthesia (LA) administration in Klinik Pergigian Chemor

SPECIFIC OBJECTIVE

- To identify the magnitude of pain in patients during local anaesthesia.
- To identify the contributing factors of pain in patients during local anaesthesia.
- To formulate remedial actions that could help to reduce pain during local anaesthesia.
- To evaluate the effectiveness of remedial measures in reducing pain during local anaesthesia.

2.3 PROCESS OF CARE



2.4 INDICATOR AND STANDARD

Indicator : Percentage of patients with pain score 4 to 10 during local anaesthesia prior to maxillary dental extraction.

FORMULA: $\frac{\text{Number of patients with pain scores of 4 to 10 during LA}}{\text{Number of patients subjected to maxillary dental extraction under LA}} \times 100\%$

Standard: $\leq 20\%$ of patients having pain during local anaesthesia.

3.0 PROCESS OF GATHERING INFORMATION

3.1 METHODOLOGY

Study Design	Quality improvement study	
Study period	Pre-intervention Intervention Post-intervention 2 nd Post-intervention	1 st Nov – 31 st Dec 2019 1 st Jan – 30 th March 2020 1 st Apr – 30 th Jun 2020 1 st Jan – 30 th March 2022
Sample population	All adult patient who require LA injection for extraction of maxillary teeth	
Sampling method	Purposive sampling	
Sample size	151 (Pre-intervention) , 82 (post-intervention) & 76 (2 nd Post-intervention)	
Study tools	LP8, Questionnaire, Practical Assessment Form, Daily report of P5VS, Pain scale.	

INCLUSION CRITERIA

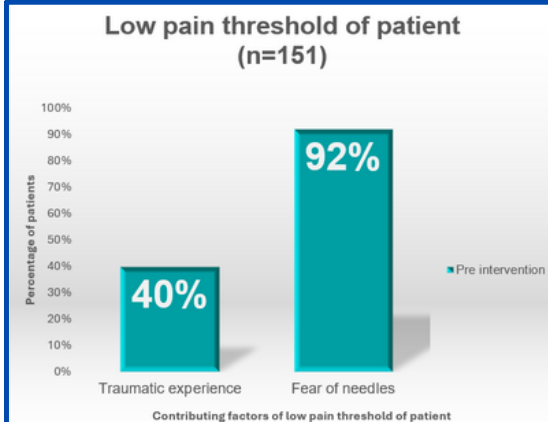
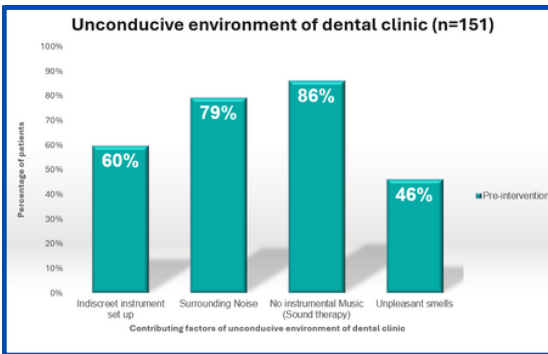
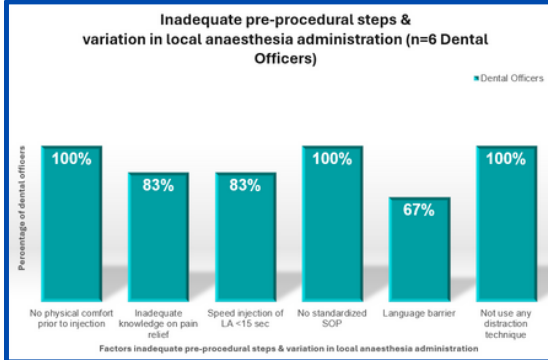
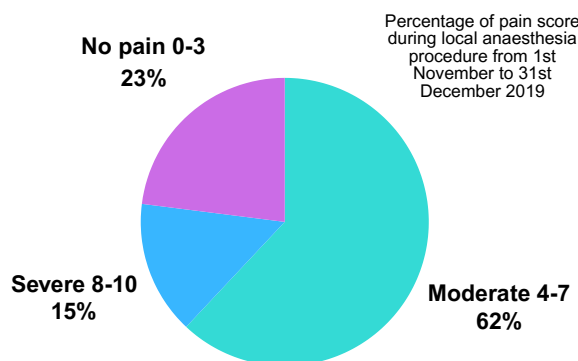
All adult patients (above 18 years old) who require LA injection for maxillary dental extraction and are willing to be enrolled

EXCLUSION CRITERIA

- Mentally challenge / uncooperative patient
- Uncontrolled hypertension / diabetes
- Physically disabled patient

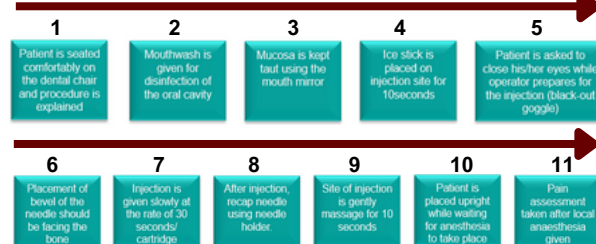
4.0 ANALYSIS AND INTERPRETATIONS

PRE-INTERVENTION RESULTS, N=151 PATIENTS



2 STANDARDIZATION OF LOCAL ANAESTHESIA PROCEDURE

A new standardization of local anaesthesia (LA) administration procedure was introduced under supervision of by Oral Maxillofacial Surgeon (OMFS) Hospital.



3 LOW PAIN THRESHOLD OF THE PATIENT

- Calm the patient with the hide-needle technique
- Patient wears a black-out goggles.

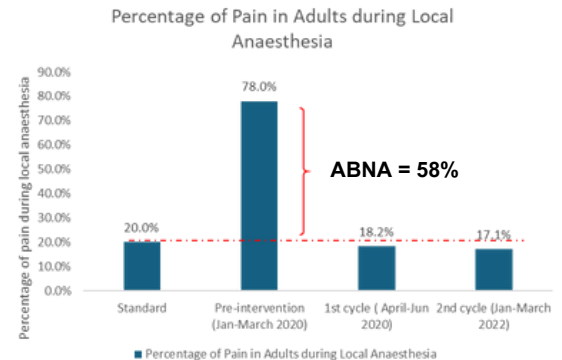


4 UNCONDUCTIVE ENVIRONMENT OF THE DENTAL CLINIC

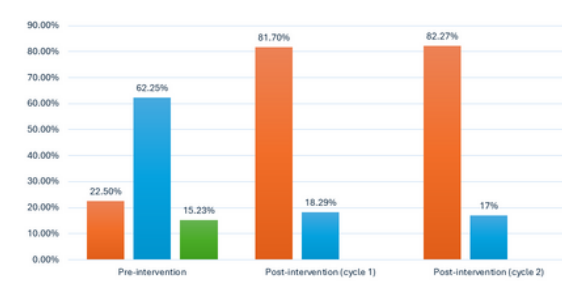
- Turn on the radio while treating the patient
- Discreet instruments set-up



6.0 EFFECT OF CHANGES



POST-INTERVENTION PAIN ASSESSMENT AFTER GIVING LOCAL ANAESTHESIA IN KLINIK PERGIGIAN CHEMOR (CYCLE 1 & 2)



NEW MODEL OF GOOD CARE

Critical steps	CRITERIA	Standard	Result (PRE)	Result 1 st cycle	Result 2 nd cycle
1	Consented dental extraction History and investigation are taken by a dental officer and consent are taken for a following dental procedure such as unresorable tooth, mobile tooth, abscess, and extraction for orthodontic treatment.	100%	100%	100%	100%
2	Pre-local anaesthetic preparation Application of ice stick on site of injection before local anaesthesia procedure for 10 seconds.	100%	0%	100%	100%
3	Local anaesthesia administration A new standard operating procedures are performed by a dental officer using a short needle ensuring: - hide-needle technique - bevel facing bone - slow injection technique within 15s estimated by dental officer.	100%	0%	100%	100%
4	Post local anaesthetic injection pain assessment Pain assessment is taken using The Pain as Fifth Vital sign (P5VS) scale which was recommended by Ministry Of Health (MOH). This tool consists of Visual-Analogue Scale/ Numerical rating scale (Moderate to severe 4-10). <small>The pain scale was adopted from the International Association for the Study of Pain (IASP) 2017</small>	<20%	77.50%	18.29%	17.10%

5.0 STRATEGIES FOR CHANGES

INADEQUATE PRE-PROCEDURAL STEP

- Innovative ice sticks
- Clinical training for dental officers to apply slow injection technique and hide-needle-technique

7.0 THE NEXT STEP

- The Project had been approved in Mesyuarat Pengurusan Daerah Kinta to implement the standardized local anaesthesia steps in other dental health facilities of Kinta district.
- Sharing sessions of the project with all SDO's of Perak in Mesyuarat hala tuju inisiatif kualiti in the state level.
- To incorporate into the orientation of the new dental officers that newly joined primary dental clinics and as a regular audit to all the dental officers.

7.0 REFERENCE/ACKNOWLEDGEMENT

- Malamed SF. Allergy and toxic reactions to local anesthetics. Dent Today, 2003;22:114-116, 118-121.
- Ghaderi, F., Banakar, S., & Rostami, S. Effect of pre-cooling injection site on pain perception in pediatric dentistry: "A randomized clinical trial" Dent Res J (Isfahan), 2013;10(6): 790-794.
- A. Linavuoti, M. Tolvanen, V. Pöijola, and S. Lahti, "Changes in dental fear among Finnish adults: a national survey," Community Dentistry and Oral Epidemiology.
- S. K. S. Ng and W. K. Leung, "A community study on the relationship of dental anxiety with oral health status and oral health-related quality of life," Community Dentistry and Oral Epidemiology.
- Mosby's medical dictionary, (8th ed.). St. Louis, MO: Mosby Elsevier.

We would like to thank the Director General of Health Malaysia for his approval to present this study. We are also grateful to our Perak State Health Director, Deputy Director of Perak State Health Department (Dentistry Division), District Health Officer of Pejabat Kesihatan Pergigian Daerah Kintar for their contribution, commitment and supports during the project.

This E-Poster was prepared for presentation at the 12th National QA Convention, 8-10 Oct 2024, Negeri Sembilan